



RED HAT
OPEN SOURCE DAY
Europe, Middle East & Africa



KNOWAGE & OPENSIFT BUSINESS ANALYTICS ON CLOUD

Alberto Ghedin
Knowage Solution Manager

KNOWAGE



#redhatosd



ENGINEERING

50 offices in Italy and abroad. 8,500 people 9% Italian market share more than 1,000 large accounts in all markets



Italy Germany Belgium Republic of Serbia Usa Brazil Argentina

RESEARCH

250 researchers 70 live projects
30 mn Euros investments 6 laboratories

333 courses on list 200 certified tutors

18,165 person/days provided

TRAINING

DATA CENTERS

PONT-SAINT-MARTIN

TURIN
MILAN
VICENZA
ROME

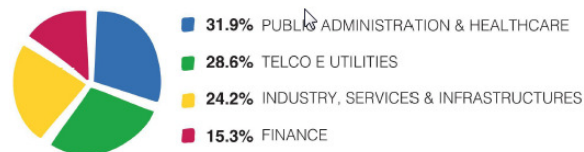
17,000 servers managed

6,000 square meters dedicated to ICT

200,000 workstations managed

6 petabytes managed

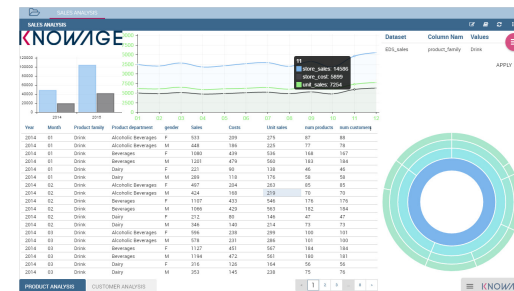
Operating revenues (in millions of Euros)



KNOWAGE

OPEN SOURCE BUSINESS ANALYTICS SUITE

- Open source and open standard
- Community edition & enterprise edition
- Cloud-ready
- Responsive GUI, ready for mobile
- OEM enabler
- Modular offering, single solution



Hadoop

NoSQL



Advanced analytics

Multistructured data

Pixel-perfect

Static report

DWH

Interactive cockpits



Self-service

OLAP

Mash-up

Geography



Maps

GIS

Real-time



Scorecards

KPI

Alert

Data mining

Forecasting



What-if

Simulation model

SDK

Integration



APIs

REST Services

Off-line production

KNOWAGE

HIGHLIGHTS

Entirely web-based & portable

Security by IT

Data integration

Agile for users

Self-service capabilities

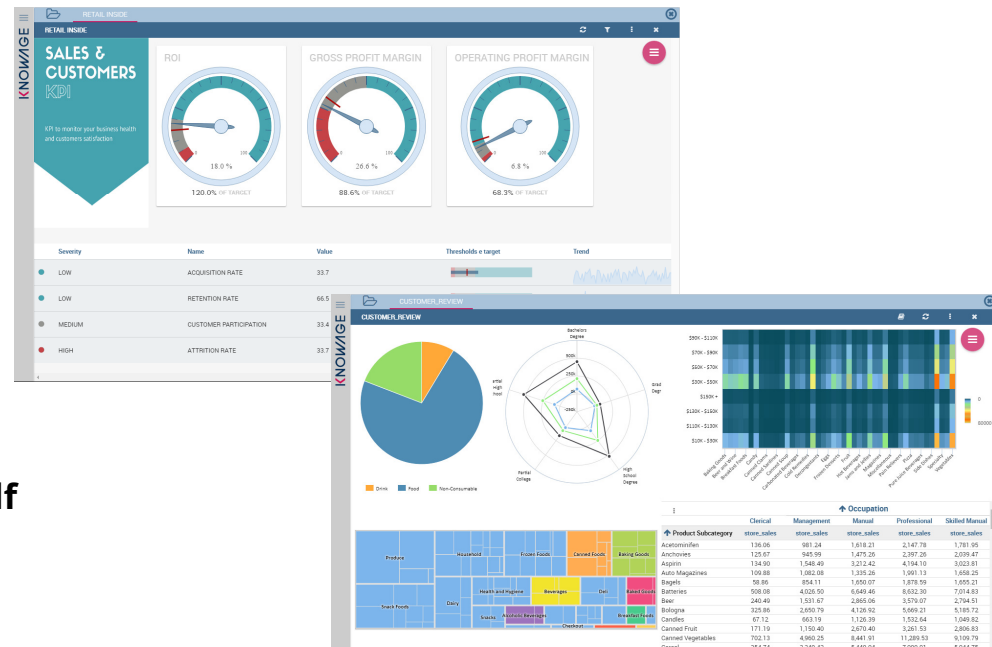
Self-organization of the **working space**

Sharing **notes** & comments

Sharing data

From ready-to-use up to **build-by-yourself**

All-in-one, with **tailored size**

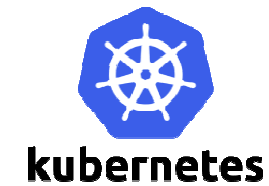
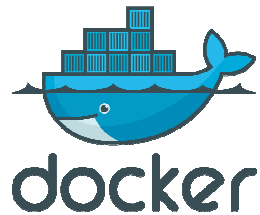


Knowage & Cloud



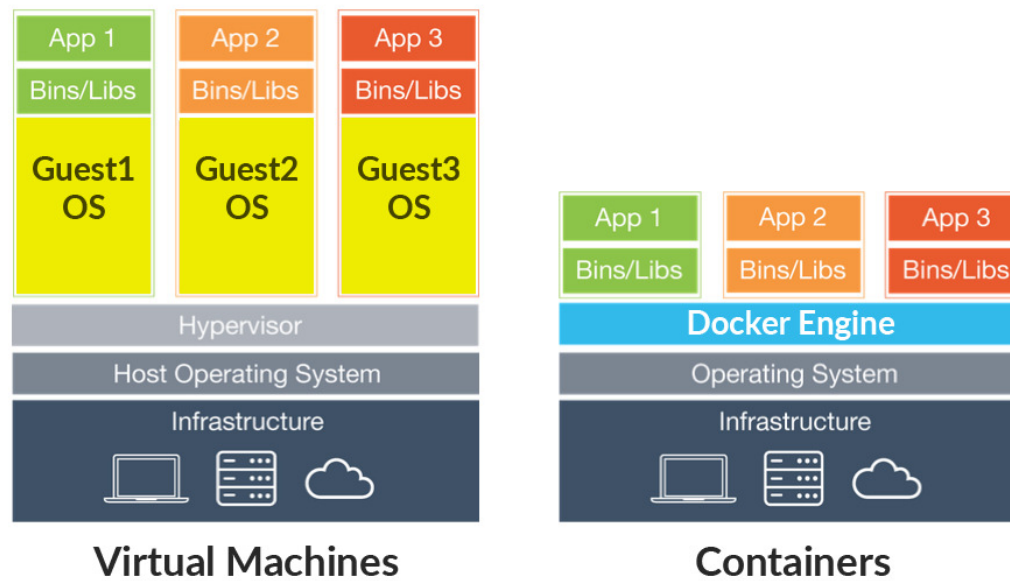
Openshift

Develop, Deploy, and Manage Your Containers

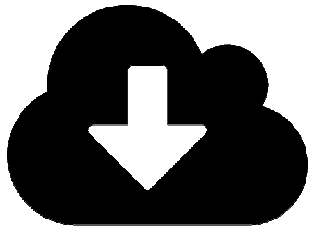


Openshift

Containers



Knowage & Openshift

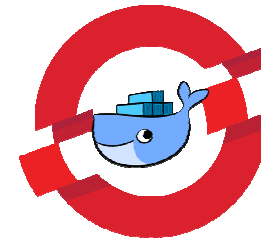


download
docker-compose.yml
from git Knowage



kubernetes

`kompose -provider openshift up`



Use Knowage
on Openshift

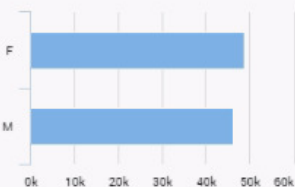
Knowage & Openshift

THAT'S IT!!!

The screenshot shows the Knowage OpenShift dashboard. At the top, there is a navigation bar with a home icon, a dropdown menu for 'Project My Project', an 'Add to Project' button, a help icon, and a user profile for 'developer'. Below the navigation bar is a sidebar with menu items: Overview (selected), Applications, Builds, Resources, Storage, and Monitoring. The main content area features a search bar with 'Name' and 'Filter by name' options, and a 'List by Application' dropdown. Under the heading 'Other Resources', there are two deployment entries, each with a 'DEPLOYMENT' label, a name, a progress indicator, and '1 pod' status. The first entry is 'knowage, #2' and the second is 'knowagedb, #1'. Both progress indicators are blue circles with a white segment, indicating they are in a pending or starting state.

KNOWAGE

SALES BY GENDER



■ Clerical
■ Manual
■ Skilled Manual
■ Management Professional

SALES BY EDUCATION LEVEL



ACTIVE SELECTION

LIST SELECTIONS

Dataset	Column N..	Values
EDS_sales	the_year	2015
EDS_sales	month_of_y...	08

APPLY

↑ education

		Bachelors Degree		Graduate Degree		High School Degree		Partial College		Partial High School		Total		
↑ store_state	↑ gender	store_sales	store_cost	store_sales	store_cost	store_sales	store_cost	store_sales	store_cost	store_sales	store_cost	store_sales	store_cost	
BC	F	1,153.00	468.00	150.00	63.00	1,468.00	588.00	418.00	169.00	803.00	313.00	3,992.00	1,601.00	
	M	1,096.00	448.00	84.00	34.00	1,175.00	477.00	451.00	181.00	1,125.00	448.00	3,931.00	1,588.00	
	SubTotal	2,249.00	916.00	234.00	97.00	2,643.00	1,065.00	869.00	350.00	1,928.00	761.00	7,923.00	3,189.00	
CA	F	1,485.00	597.00	416.00	165.00	1,323.00	520.00	446.00	180.00	2,414.00	969.00	6,084.00	2,431.00	
	M	1,557.00	620.00	578.00	230.00	2,260.00	899.00	726.00	292.00	1,891.00	756.00	7,012.00	2,797.00	
	SubTotal	3,042.00	1,217.00	994.00	395.00	3,583.00	1,419.00	1,172.00	472.00	4,305.00	1,725.00	13,096.00	5,228.00	
DF	F	769.00	314.00	351.00	139.00	1,261.00	501.00	334.00	128.00	1,046.00	431.00	3,761.00	1,513.00	
	M	1,284.00	520.00	233.00	99.00	1,833.00	743.00	424.00	172.00	1,625.00	654.00	5,399.00	2,188.00	
	SubTotal	2,053.00	834.00	584.00	238.00	3,094.00	1,244.00	758.00	300.00	2,671.00	1,085.00	9,160.00	3,701.00	
Guerrero	F	277.00	108.00	30.00	13.00	358.00	139.00	280.00	117.00	691.00	273.00	1,636.00	650.00	
	M	568.00	225.00	105.00	45.00	317.00	131.00	364.00	144.00	697.00	291.00	2,051.00	836.00	
	SubTotal	845.00	333.00	135.00	58.00	675.00	270.00	644.00	261.00	1,388.00	564.00	3,687.00	1,486.00	
Jalisco	F	63.00	25.00	13.00	7.00	106.00	42.00	32.00	11.00	59.00	23.00	273.00	108.00	
	M	57.00	22.00	3.00	1.00	30.00	11.00	42.00	17.00	26.00	11.00	158.00	62.00	
	SubTotal	120.00	47.00	16.00	8.00	136.00	53.00	74.00	28.00	85.00	34.00	431.00	170.00	
						00	137.00	52.00	1,645.00	655.00	620.00	251.00	1,674.00	664.00
						00	221.00	88.00	1,730.00	687.00	783.00	314.00	1,591.00	622.00
												5,834.00	2,322.00	

FUNCTIONS

TEXT ANALYSIS

Make sense of unstructured text

MACHINE LEARNING

Teach your app to teach himself

COMPUTER VISION

Identify objects in images

UTILITIES

Ready to use microservices

ALL

Visualize all your functions

product mining time series linear price pattern forecasting sales prediction regression

Q Search

Function Name

Owner

Sales Price Impact

demo_admin

Sales Forecasting

demo_admin

Execute Demo

Product Sales Prediction

demo_admin

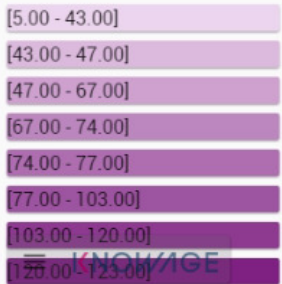


DOCUMENT: NAVIGAZIONE SITO PONT

- Rack capacity
- # Rack
- Rack fill rate
- # RU Capacity
- # RU Used
- # RU Reserved
- # RU Free
- RU fill rate
- # Clients
- # Objects

LAYERS

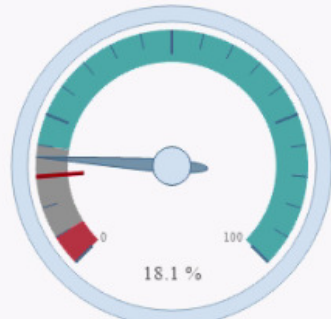
LEGEND



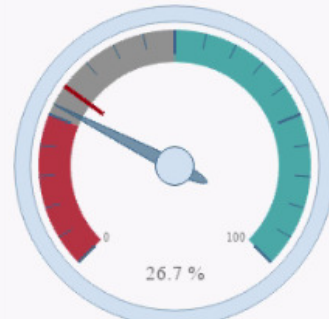
SALES & CUSTOMERS KPI

KPI to monitor your business health and customers satisfaction

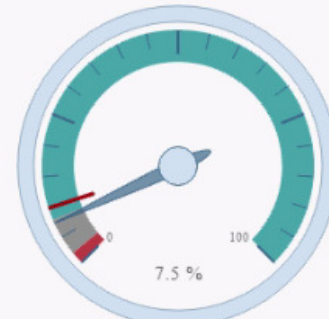
ROI



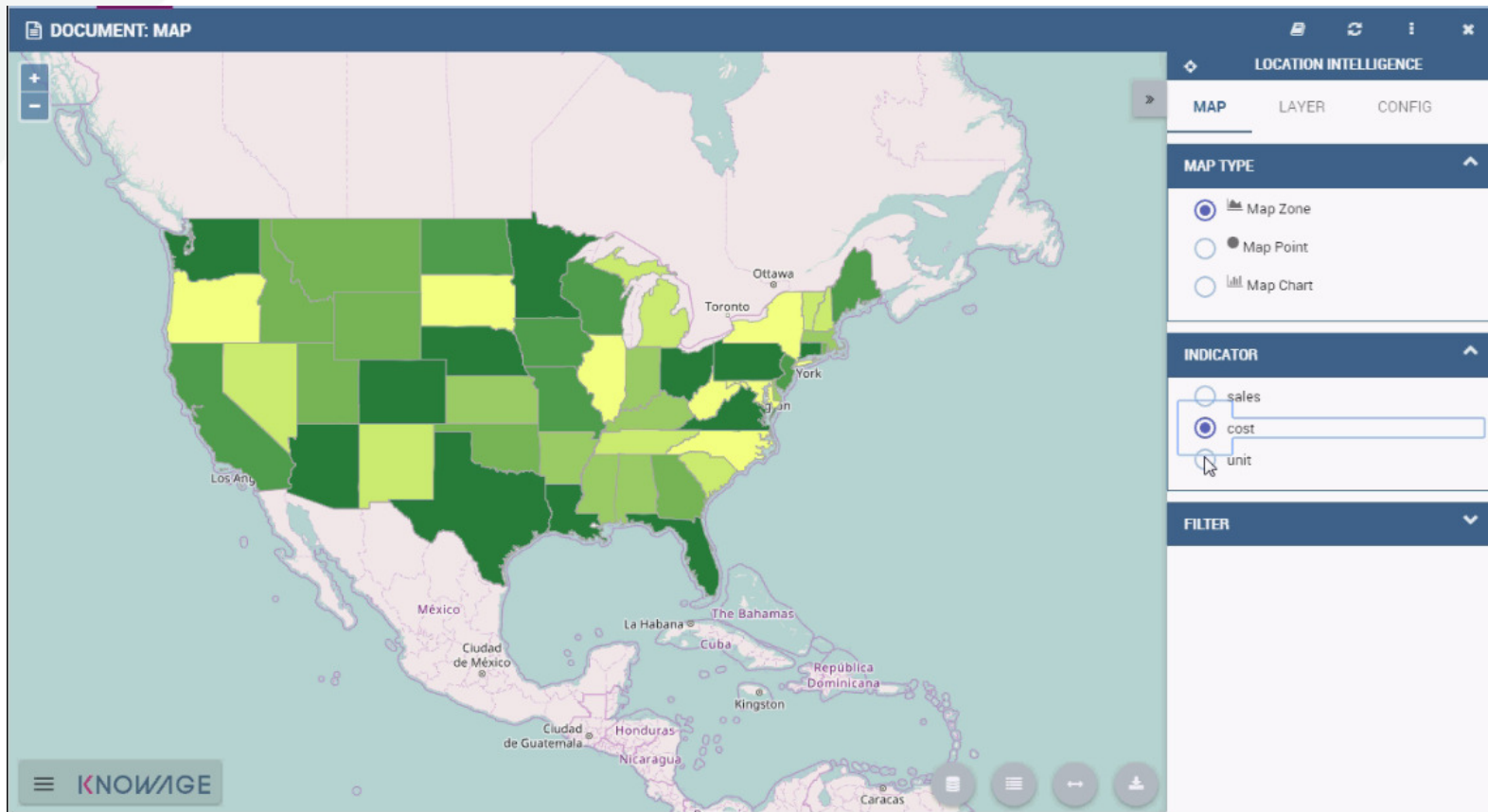
GROSS PROFIT MARGIN



OPERATING PROFIT MARGIN

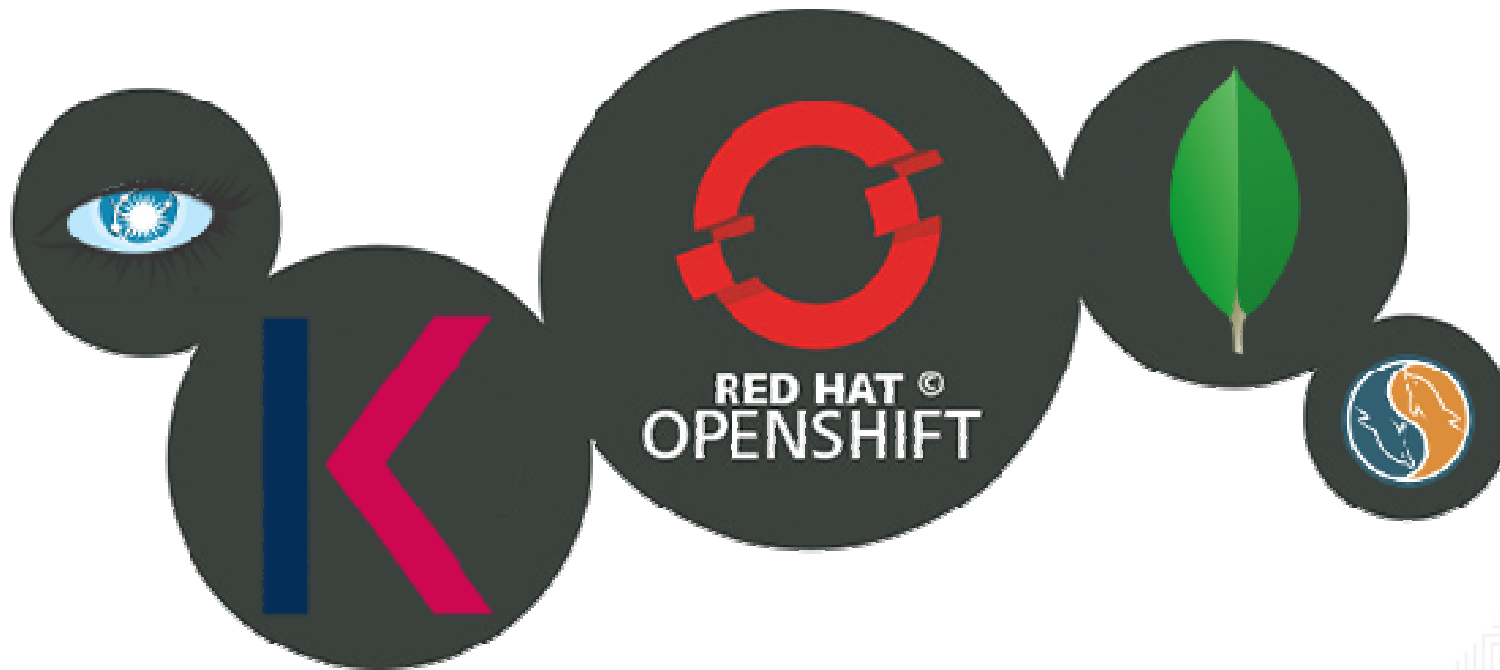


Severity	Name	Value	Thresholds e target	Trend
● LOW	ACQUISITION RATE	33.2		
● LOW	RETENTION RATE	66.5		
● MEDIUM	CUSTOMER PARTICIPATION	33.3		
● HIGH	ATTRITION RATE	33.2		



Knowage & Openshift & More

Data Sources in the Cloud



Knowage & Openshift & More

```
C:\Users\ghedin>oc new-app -e MONGODB_USER=user -e MONGODB_PASSWORD=user -e MONGODB_DATABASE=test -e MONGODB_ADMIN_PASSWORD=admin centos/mongodb-26-centos7
```

Project: My Project | Add to Project | developer

Name Filter by name | List by Application

APPLICATION: mongodb-26-centos7 <http://mongo-myproject.192.168.99.100.nip.io>

DEPLOYMENT: mongodb-26-centos7, #1 | 1 pod

Other Resources

DEPLOYMENT: knowage, #2 | 1 pod

DEPLOYMENT: knowagedb, #1 | 1 pod

<https://192.168.99.100:8443/console/project/myproject/overview>

Knowage & Openshift & More

```
D:\Programmi\openshift-origin-client-tools-v3.6.0-c4dd4cf-windows>oc rsh mongodb-26-centos7-1-sg5xu
sh-4.2$ mongo -u user -p user test
MongoDB shell version: 2.6.9
connecting to: test
Welcome http://docs.mongodb.org/
Questions? Try the support group".
For morehttp://groups.google.com/group/mongodb-user
> db.simple.findOne()
null
> db.simple.insert<< item: "Spritz", qty : 6, type: "Prosecco">>;
WriteResult<< "nInserted" : 1 >>
> db.simple.insert<< item: "Spritz", qty : 4, type: "Aperol">>;
WriteResult<< "nInserted" : 1 >>
> db.simple.insert<< item: "Spritz", qty : 2, type: "Soda">>;
  qty : 3, type: "Gin">>;
db.simple.insert<< item: "Negroni", qty : 3, type: "Campari">>;
db.simple.insert<< item: "Negroni", qty : 3, type: "Marini">>;

db.simple.insert<< item: "Americano", qty : 3, type: "Campari">>;
db.simple.insert<< item: "Americano", qty : 3, type: "Marini">>;
db.simple.insert<< item: "Americano", qty : 1, type: "Soda">>;
db.simple.insert<< item: "Americano", qty : 1, type: "Scorza limone">>;WriteResult<< "nInserted" : 1
>
> db.simple.insert<< item: "Negroni", qty : 3, type: "Gin">>;
WriteResult<< "nInserted" : 1 >>
> db.simple.insert<< item: "Negroni", qty : 3, type: "Campari">>;
WriteResult<< "nInserted" : 1 >>
> db.simple.insert<< item: "Negroni", qty : 3, type: "Marini">>;
WriteResult<< "nInserted" : 1 >>
```

Knowage & Openshift & More





RED HAT
OPEN SOURCE DAY

Europe, Middle East & Africa

KNOWAGE



#redhatosd